



## Field reconnaissance program commenced at Galah Well and Peperill Hill

### Highlights:

- Consultant has been engaged and commenced field program at Galah Well (E29/1023) and Peperill Hill tenements (E29/1024)
- The field program will assess access, map geology and sample rocks within the tenements for Co-Cu-Ni prospectively

\*\*\*

The Board of Victory Mines Limited (ASX:VIC) (“the Company” or “VIC”) is pleased to confirm the commencement of a field reconnaissance program at the Company’s Galah Well and Peperill Hill tenements.

Non-Executive Director Rohan Dalziell commented: “The objective of the field reconnaissance program is to undertake high level regional sampling to refine the prospectively of the region. This work will allow a clear exploration strategy to be formulated and budgeted with specific targets and criteria to be identified”.

### Galah Well & Peperill Hill, Goldfields WA

The Galah Well and Peperill Hill projects are located in a region which is highly prospective for nickel copper mineralisation (Figure 1). Notably, St George Mining (ASX: SQG) has been successfully developing its Mt Alexander nickel-copper project<sup>1</sup> and achieving respectable drilling results, while Talisman’s (ASX: TLM) Sinclair Mine produced 38,000t of nickel<sup>2</sup> between 2008-13.

Previous desktop studies<sup>3</sup> which analysed aero-magnetic imagery, highlighted that Galah Well and Peperill Hill projects are close to where two (and possibly three) differing mineralised systems intersect. Consequently, this largely explains why the projects are highly prospective for nickel-copper hosted within sulphide and laterite mineralisation.

As can be seen in Figure 1 below, there is a north-south trending magnetic anomaly, likely a shear zone, connecting TLM’s Sinclair Mine with the Schmitz Well prospect. The Peperill Hill project contains several similar north-south trending structures which are prospective for lateritic nickel mineralisation. Further, there are a series of east-west structures – known as Proterozoic dykes of the Widgiemooltha Supersuite – that intersect both projects and are prospective for nickel-copper sulphide mineralisation.

**Victory Mines Limited ABN 39 151 900 855**

Registered Office: Ground Floor, 16 Ord Street, West Perth WA 6005

Telephone +61 8 9482 0506

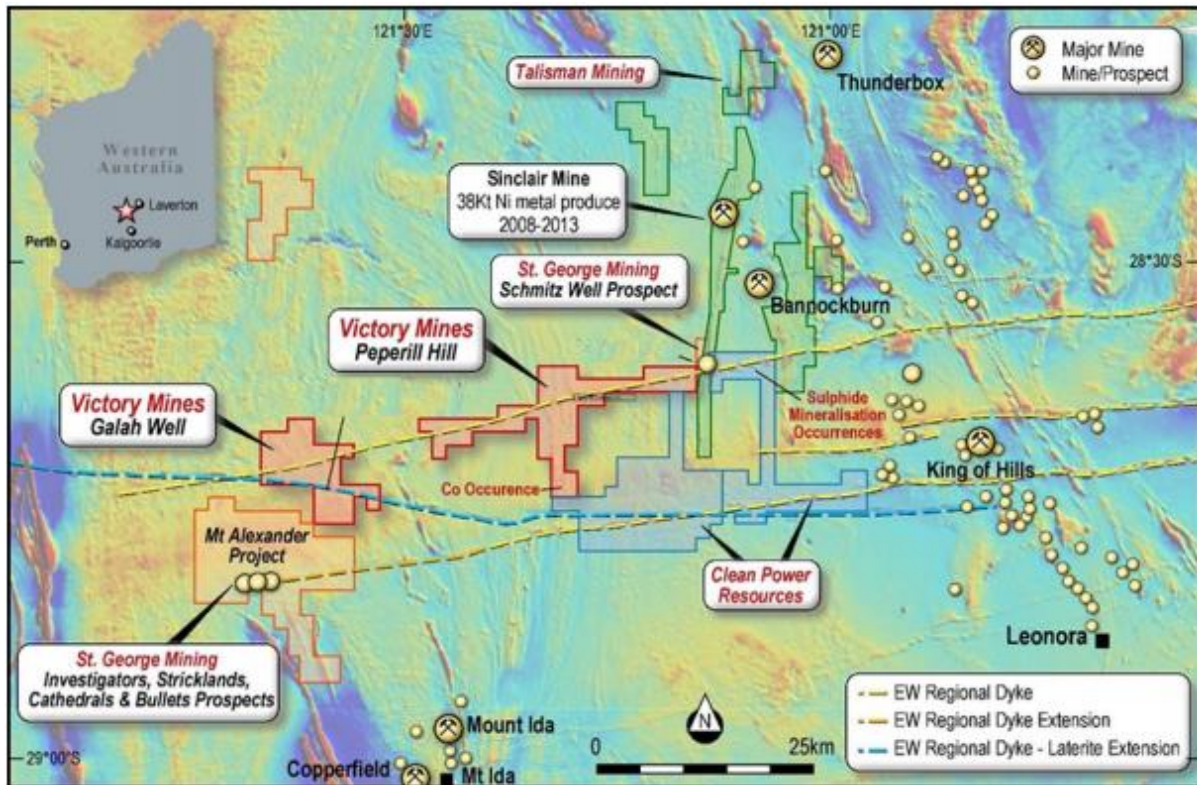
[www.victorymines.com](http://www.victorymines.com)

For personal use only

ASX ANNOUNCEMENT  
14 October 2019

With both projects clearly delivering exploration upside for nickel-copper mineralisation, VIC's geology consultant has been engaged to undertake the current site visit to map and collect samples from known-priority target areas. This visit is timely given growing global demand for nickel primarily from the expanding electric vehicle sector.

**FIGURE 1: GALAH WELL & PEPPERILL HILL PROJECTS VS PEERS IN WA GOLDFIELDS**



Source: VIC geology team

### Next Steps

VIC's geology consultant will return with samples for multielement analysis and pXRF results and the findings and interpretation will be released as appropriate.

For and on behalf of the Board  
**Rohan Dalziell**  
Non-Executive Director

**Victory Mines Limited ABN 39 151 900 855**

Registered Office: Ground Floor, 16 Ord Street, West Perth WA 6005

Telephone +61 8 9482 0506

[www.victorymines.com](http://www.victorymines.com)

ASX ANNOUNCEMENT  
14 October 2019

**For more information:**

Please visit our website for more information: [www.victorymines.com](http://www.victorymines.com)

OR

Contact Dane Etheridge, Company Secretary: +61 8 9482 0506

References:

- 1) SGQ ASX Release – 9 October 2019
- 2) TLM Annual Report 2015 released 30 September 2015
- 3) VIC ASX Release – 27 July 2018

For personal use only

**Victory Mines Limited ABN 39 151 900 855**

**Registered Office:** Ground Floor, 16 Ord Street, West Perth WA 6005

**Telephone** +61 8 9482 0506

[www.victorymines.com](http://www.victorymines.com)